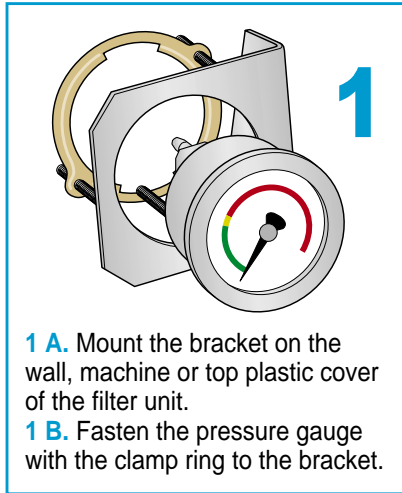
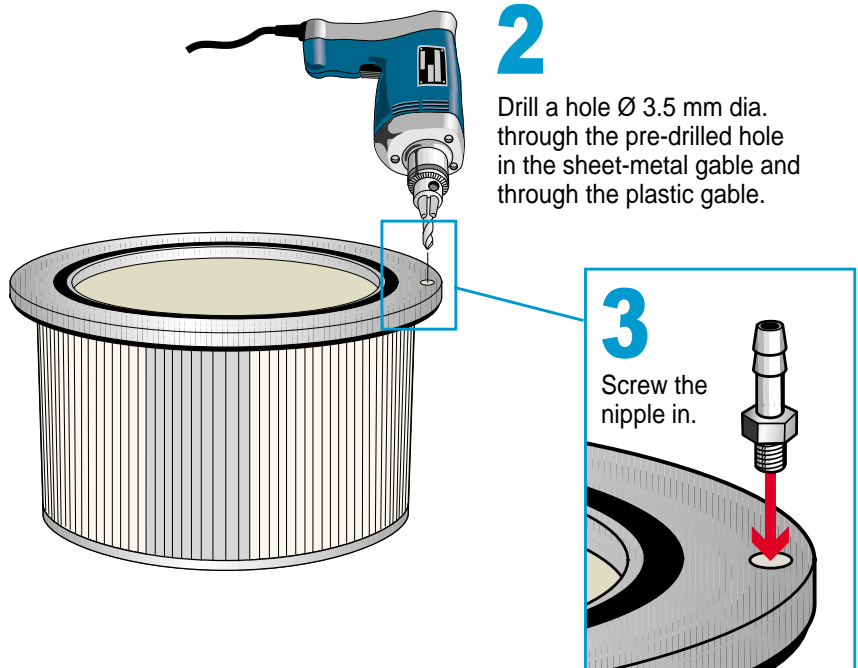


Pressure Gauge for NOM 4 Filter Unit

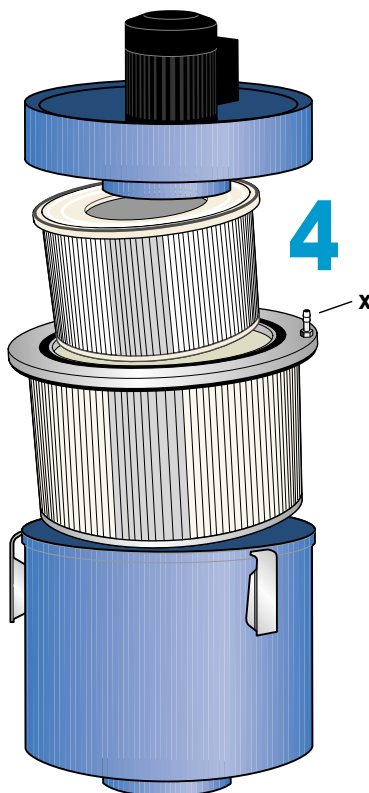


1 A. Mount the bracket on the wall, machine or top plastic cover of the filter unit.
1 B. Fasten the pressure gauge with the clamp to the bracket.

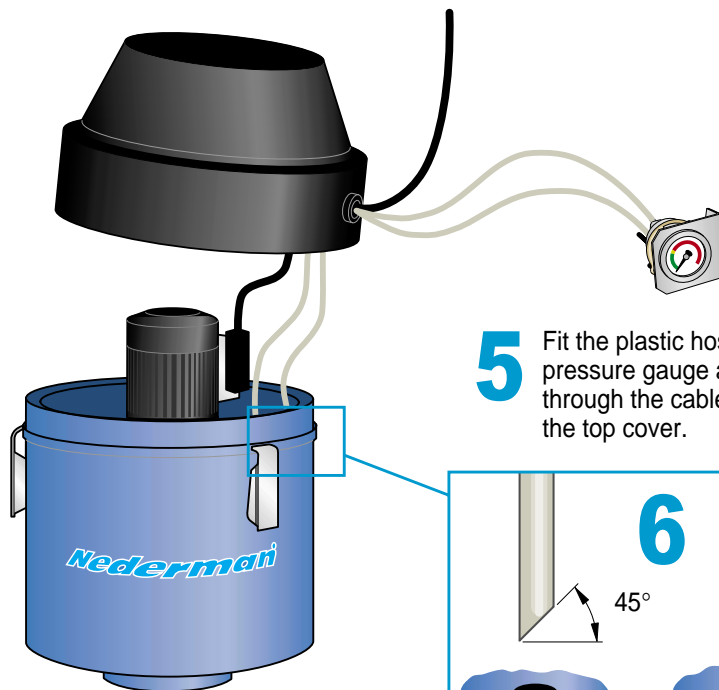


2 Drill a hole \varnothing 3.5 mm dia. through the pre-drilled hole in the sheet-metal gable and through the plastic gable.

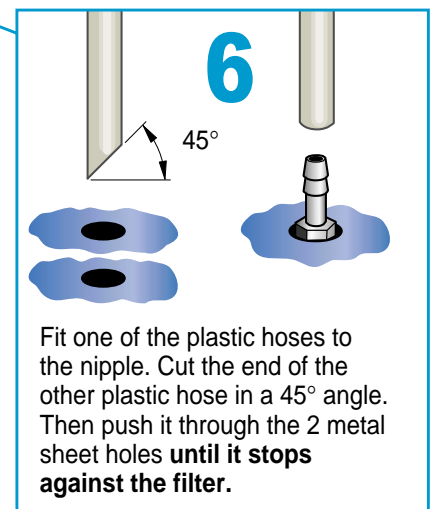
3 Screw the nipple in.



Put the pre-filter, HEPA-filter and fan unit together in the filter unit casing. **Important: Make sure that the nipple (x) meets the hole in the filter unit casing.**



5 Fit the plastic hoses to the pressure gauge and let them through the cable passage in the top cover.



6 Fit one of the plastic hoses to the nipple. Cut the end of the other plastic hose in a 45° angle. Then push it through the 2 metal sheet holes **until it stops against the filter.**

When the filter unit has been started, act according to the following steps:

- Loosen the lower hose to the pressure gauge.
- Turn the damper handle until the pressure gauge shows 700 Pa. **If the arrow does not turn in the right direction, change the plastic hose connections with each other.**
- Remount the hose.

7