

# 2-in-1 Waste Oil Drainer and Changer Instruction Manual

---



## **WARNING:**

Read carefully and understand all **INSTRUCTIONS** before operating. Failure to follow the safety rules and other basic safety precautions may result in serious personal injury. Save these instructions in a safe place and on hand so that they can be read when required. Keep these instructions to assist in future servicing.

---

# INDEX

1. TECHNICAL DETAILS -----	E1
2. SAFETY PRECAUTIONS -----	E1
3. ASSEMBLY -----	E2~E6
4. TROUBLE SHOOTING GUIDE -----	E7
5. LIMITED WARRANTY -----	E7
6. EXPLODED & PART LIST -----	E8
7. OIL COLLECTING BOWL ASSEMBLY & PART LIST -----	E9
8. RESERVOIR & PART LIST -----	E10
9. VACUUM ASSEMBLY & PART LIST -----	E11

# 1. TECHNICAL DETAILS

Item No.	OD120.05	OD135.04	OD120.13	OD135.14
Ref. No.	16106511	16109011	16106512	16109012
Tank Capacity	65L	90L	17gallon	24gallon
Total Suction Capacity	42-45L	65-70L	11-12gallon	17-18.5gallon
Air Pressure For Vacuum	7-8bar		100-115psi	
Depressurization Time	120-150s	150-180s	120-150s	150-180s
Suction Speed	1.5-2lpm		0.4-0.5gpm	
Suction Hose	2000mm		78.7"	
Collection Bowl Capacity	18L		4.8Gallon	
Collection Bowl Diameter	400mm		16"	
Maximum Height	1700mm	1830mm	67"	72"
Minimum Height	1200m	1350mm	47.2"	53.1"
Minimum Height With Chamber	1370mm	1500mm	54"	59"
Extension Funnel Diameter	606mm		23.8"	
Max. Draining Capacity	45L	70L	12gallon	18.5gallon
Max. Draining Pressure	1bar		14.5psi	
Draining Hose Length	2000mm		78.7"	
Air Inlet Connection	1/4" quick plug		1/4" NPT Female	

# 2. SAFETY PRECAUTIONS

## GENERAL SAFETY RULES

### **▲WARNING**

Read and understand all instructions.

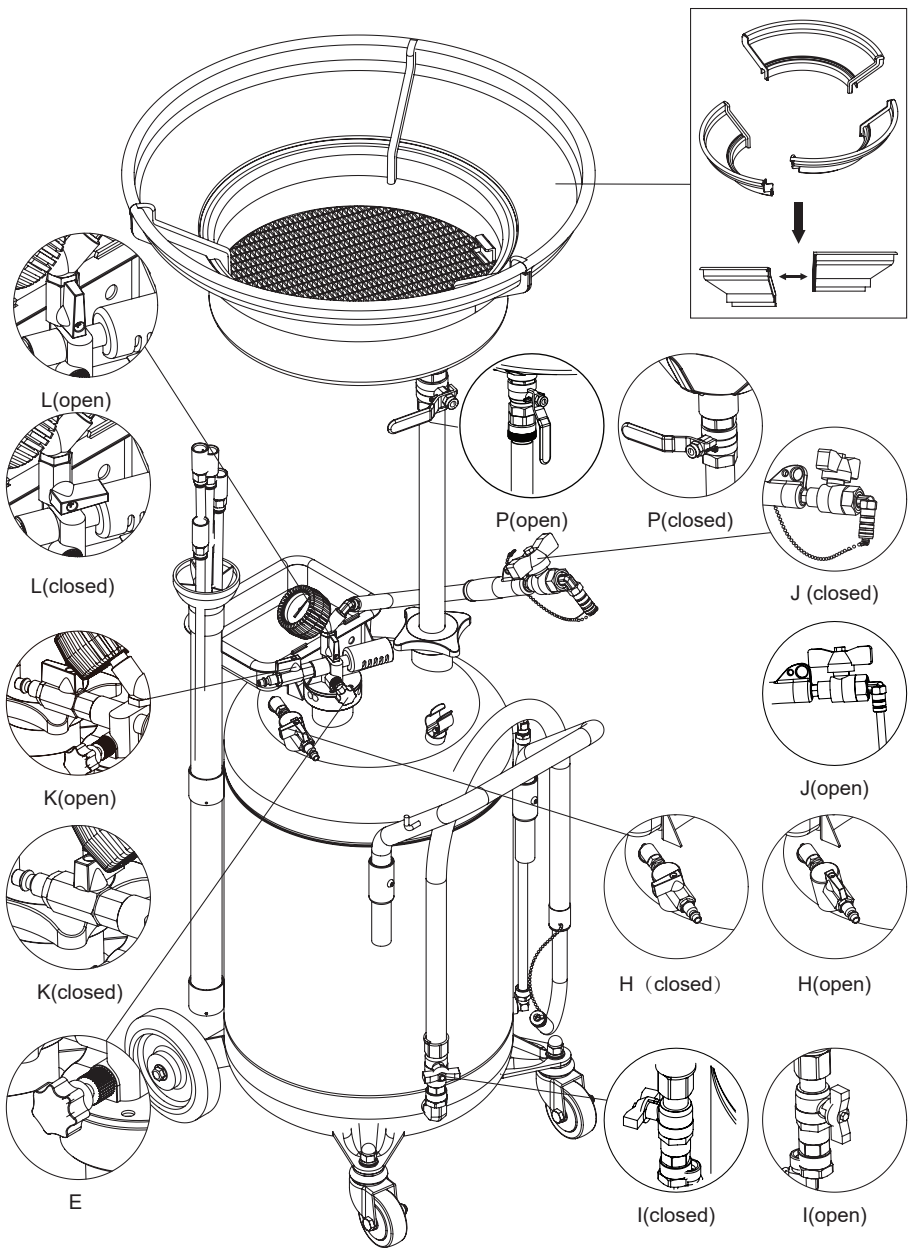
The warnings, cautions, and instructions discussed in this instruction manual cannot cover all possible conditions or situations that could occur. It must be understood by the operator that common sense and caution are factors which cannot be built into this product, but must be supplied by the operator.

- Do not extract caustic or flammable products.
- Do not expose the reservoir to any source of heat.
- While extracting high temperature oils, keep hands and face protected.
- Only use the device for the purpose for which it has been designed.
- Do not modify any component of the equipment.
- Only use original spare parts.
- Our technical office is at you full dispolm for any information you may need.

### **▲CAUTION**

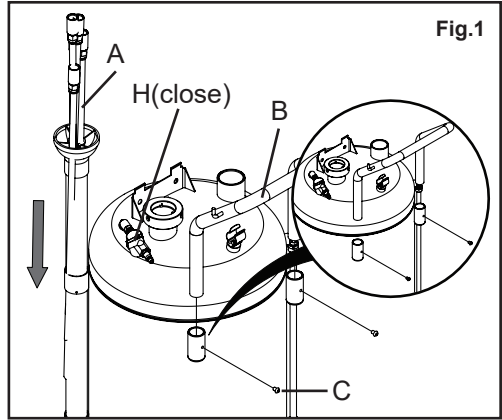
1. Never fill the reservoir over the maximum level indicated by the gauge that is located on the side of the reservoir.
2. Don't exceed maximum pressure 1bar/14.5psi for draining.
3. Air pressure for vacuum is maximum 8bar/115psi.
4. Open the bottom nut of the reservoir termly and clean out any dirty to avoid jam.

### 3. ASSEMBLY

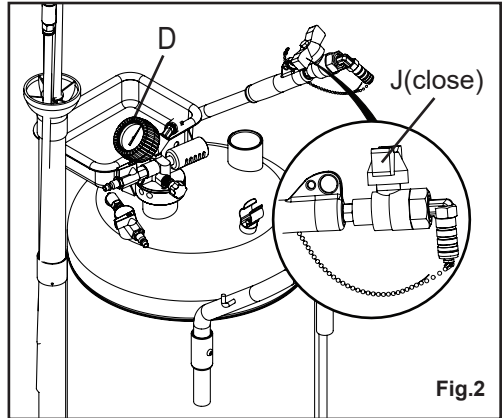




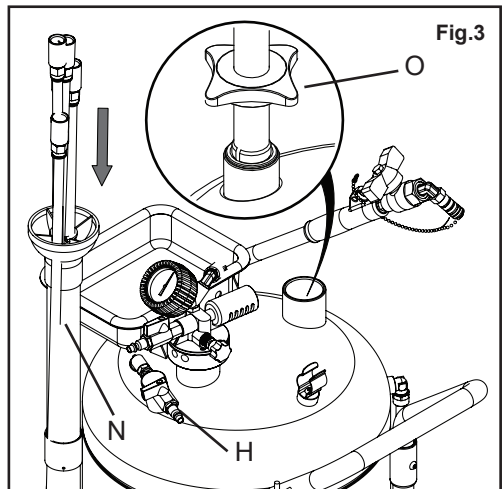
1. Assemble the handle(B) and the air inlet fitting, turn off the ball valve(H).  
(See Fig.1)



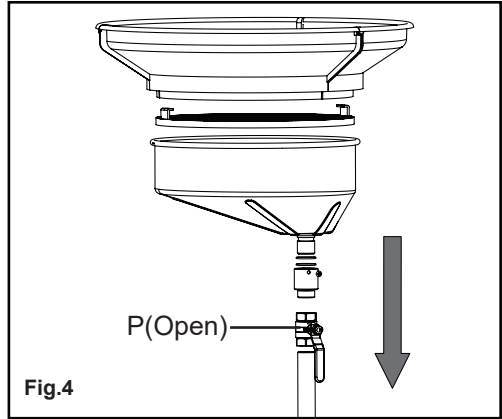
2. Assemble the vacuum gauge(D) and turn off the ball valve(J). (See Fig.2)



3. Insert the tube(N) into the reservoir, then turn the handwheel(O) clockwise direction and tighten.  
(See Fig.3)

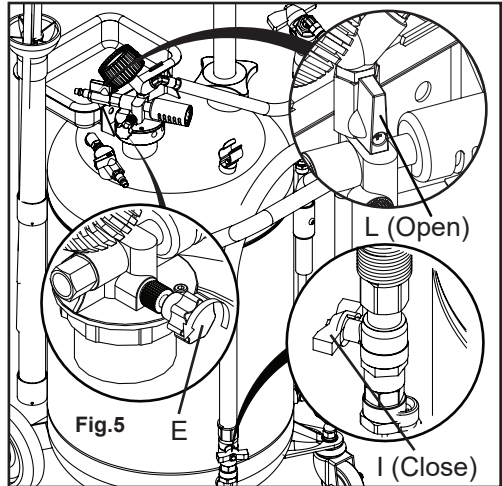


4. Assemble the supporting tube, ball valve (P), oil collecting bowl, filtrating plank and extension funnel orderly. (See Fig.4)

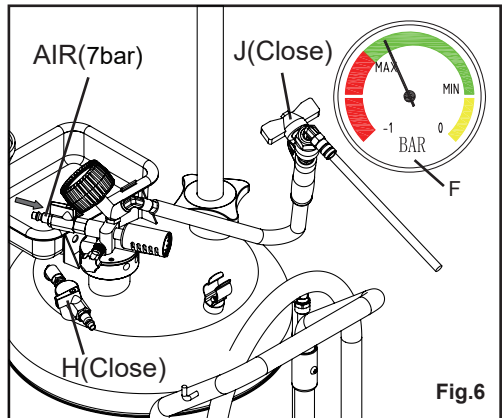


### OPERATION SUCKING

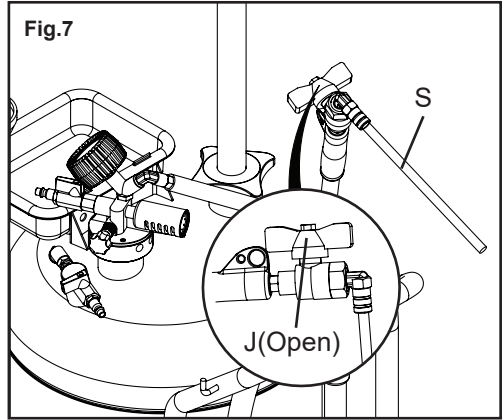
5. Close all the valves (K, P, J, H, I, L). Turn on the handwheel (E) anticlockwise direction and turn on the valve(L). (See Fig.5)



6. Connect the air supply, and make the vacuum gauge (F) index reach the green area. (See Fig.6)

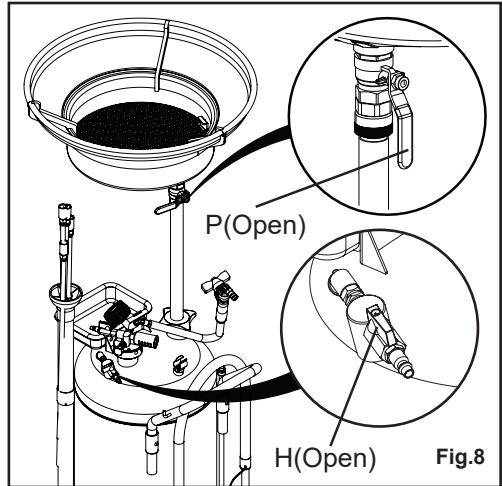


7. Connect the probe (S), then put it into the car engine, turn on the ball valve (J) for sucking oil. (See Fig.7)

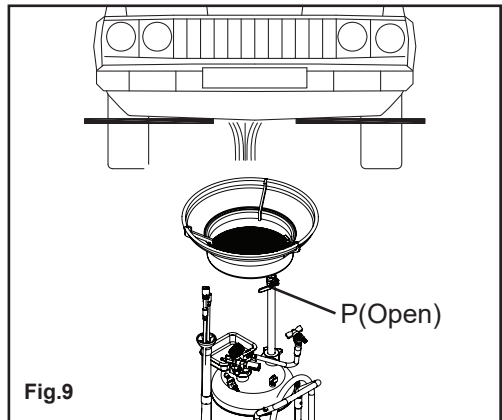


**COLLECTING**

8. Close all the valves (K, P, J, H, I, L). Turn on the ball valve (P) and the valve (H). (See Fig.8)

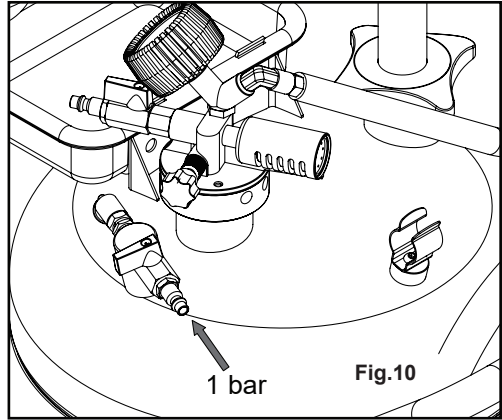


9. Place the oil drainer under the car to collect the waste oil. Turn on the ball valve(P). (See Fig.9)

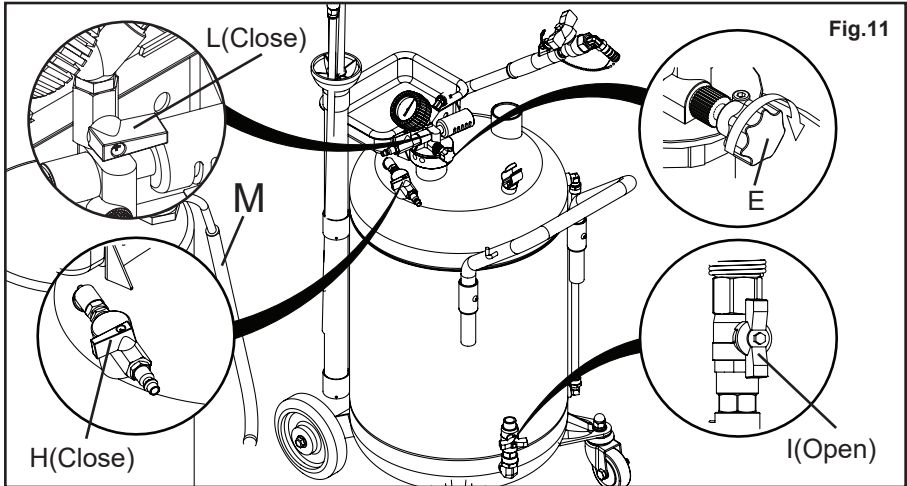


**DRAINING**

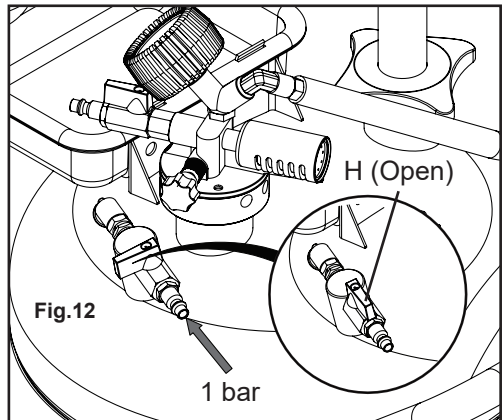
10. Close all the valves (K, P, J, H, I, L).  
(See Fig.10)



11. Close the handwheel (E) clockwise direction, put the spout (M) into the waste oil tank, then open the valve (I). (See Fig.11)



12. Connect the air supply, and open the valve (H) for draining.  
(See Fig.12)



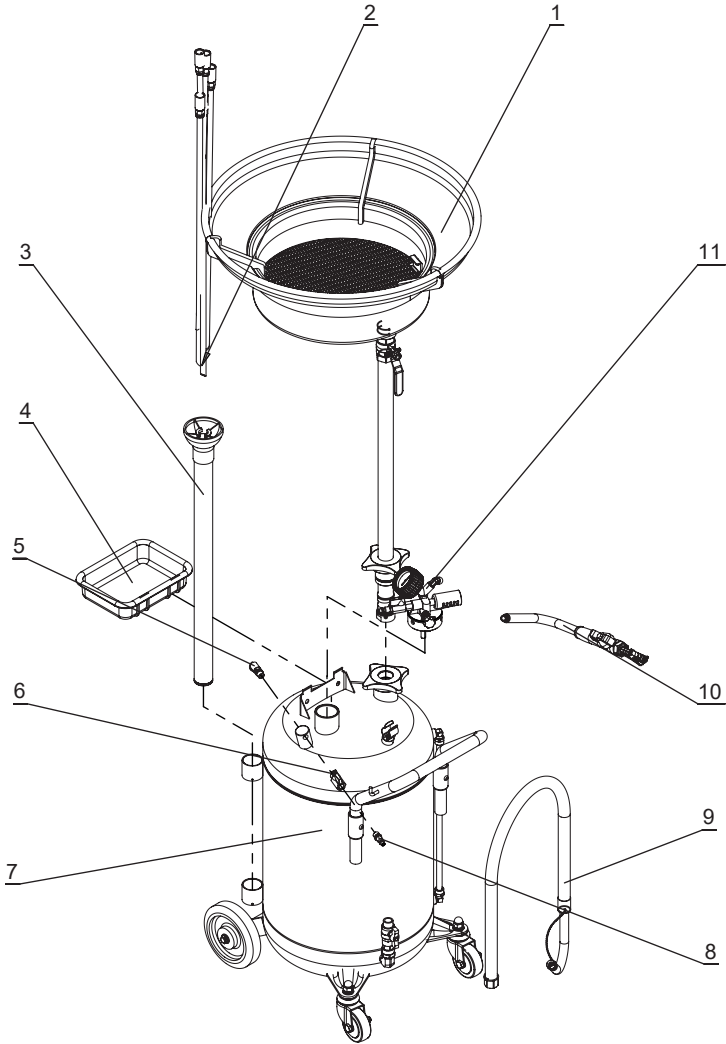
## 4. TROUBLE SHOOTING GUIDE

Problem	Cause	Solution
Turn on the air source, the vacuum gauge index no move.	Damage or jam on the vacuum gauge.	Change the vacuum gauge.
The index on vacuum gauge can't reach the green area.	1. Air supply pressure is too low. 2. Air flow is not enough.	1. Increase the air supply pressure. 2. Enlarge the air inlet diameter, shorten the hose length.
The vacuum gauge index reaches the green area, but oil still can't be suction.	1. Oil temperature is too low. 2. There is jam in valve of the suction hose. 3. There is jam inside the suction hose or suction fitting.	1. Increase the oil temperature (eg. start the engine etc.). 2. Clean up the valve 3. Clean or change the suction hose or suction fitting.
The vacuum gauge showing the leakage and can't suction the oil.	1. O-ring of the suction fitting is broken. 2. The bottom of the suction hose is higher than the oil level.	1. Change the O-ring immediately. 2. Keep the suction hose straight and ensure the hose touch with the oil.

## 5. LIMITED WARRANTY

- The manufacturer warrants this product against defects in material and craftsmanship, for a period of one year from date of purchase, but not including wearing parts.
- Manufacturer's liability is limited to replacement or repair of defective material within the warranty period.
- The warranty does not cover damage caused by accident, misuse or faulty installation.
- The product must be installed and maintained in compliance with the instructions.

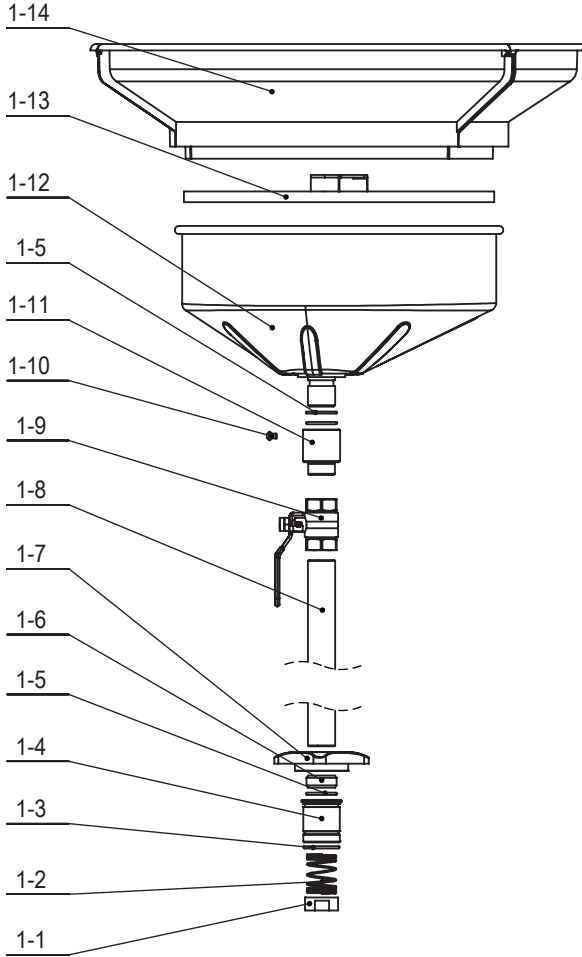
## 6. EXPLODED & PART LIST



Part No.	Description	Q'ty	Part No.	Description	Q'ty
1	Oil collecting bowl assembly	1	7	Reservoir	1
2	Probe kit	1	8	Quick plug	1
3	Probes container	1	9	Discharging hose assembly	1
4	Tool tray	1	10	suction hose assembly	1
5	Safety valve	1	11	Vacuum assembly	1
6	Ball valve	1			

#: Optional accessories \*: Wearing parts

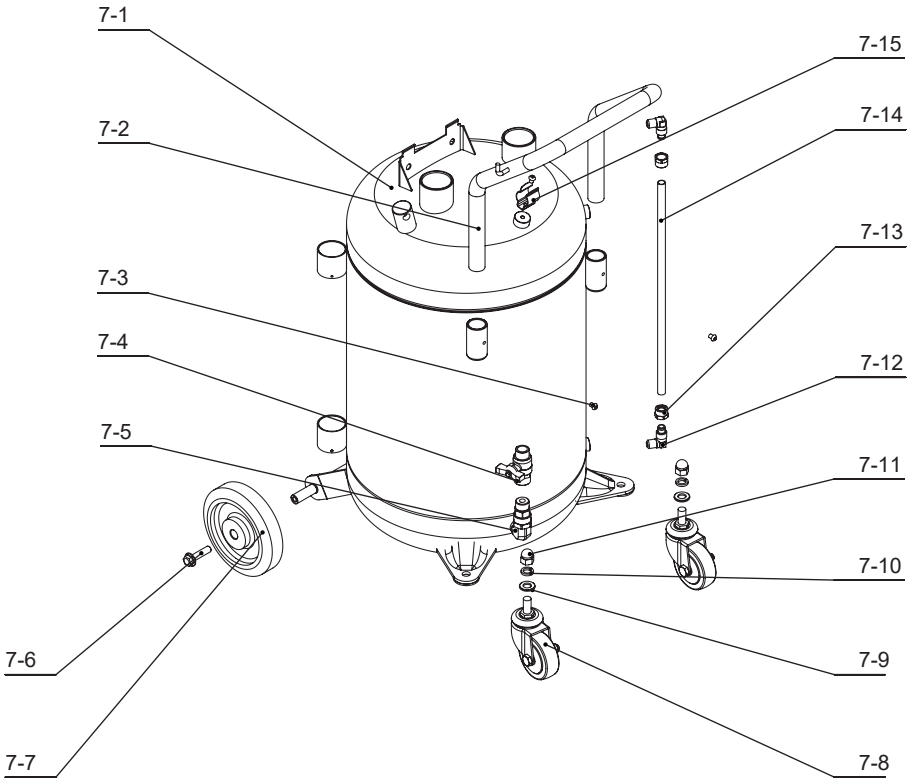
## 7. OIL COLLECTING BOWL ASSEMBLY & PART LIST



Part No.	Description	Q'ty	Part No.	Description	Q'ty
1-1	Check nut	1	1-8	Supporting tube	1
1-2	Compression spring	1	*1-9	Ball valve	1
*1-3	O-ring	2	1-10	Nut	1
1-4	Sealing bush	1	1-11	Retainer sleeve	1
*1-5	O-ring	4	1-12	Oil collecting bowl	1
1-6	Expansion cover	1	1-13	Filtrating plank	1
1-7	Handwheel	1	#1-14	Extention funnel	1

#: Optional accessories \*: Wearing parts

## 8. RESERVOIR & PART LIST

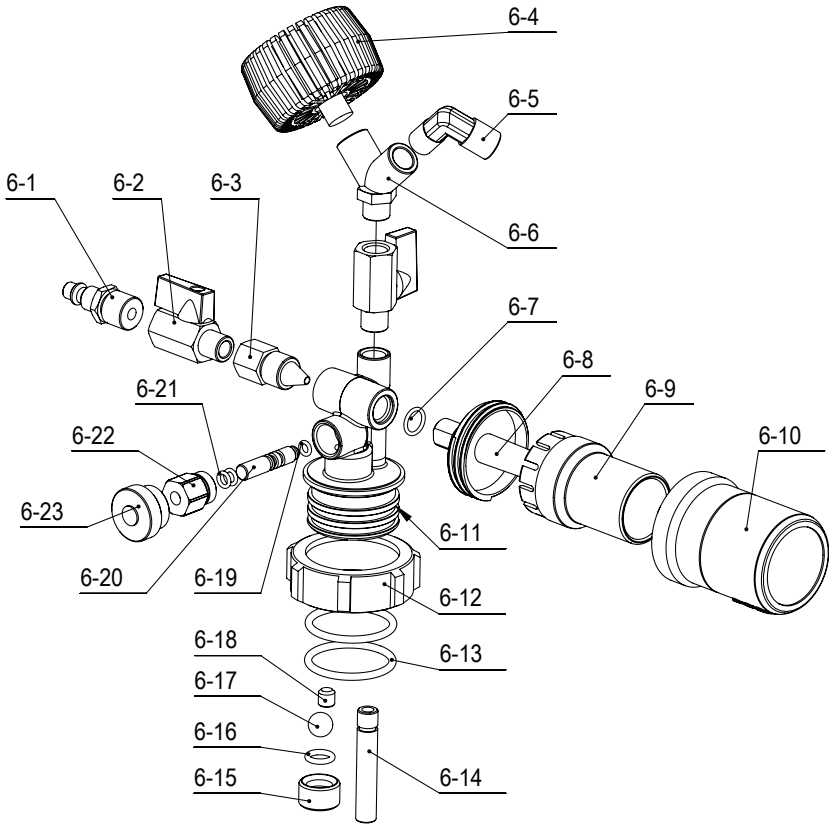


Part No.	Description	Q'ty	Part No.	Description	Q'ty
7-1	Reservoir assembly	1	7-9	Spring washer	2
7-2	Handle	1	7-10	Gasket	2
7-3	Screw	3	7-11	Nuts	2
7-4	Butterfly valve	1	7-12	Elbow	2
7-5	Swivel fitting	1	7-13	Nut	2
7-6	Bolts	2	7-14	Tube with lable	1
7-7	Wheel	2	7-15	Clip	1
7-8	Caster	2			

#: Optional accessories \*: Wearing parts



## 9. VACUUM ASSEMBLY & PART LIST



Part No.	Description	Q'ty	Part No.	Description	Q'ty
*6-1	Quick plug	1	*6-13	O-ring	2
*6-2	Ball valve	2	6-14	Inlet tube	1
6-3	Muzzle	1	6-15	Valve sleeve	1
6-4	Vacuum meter	1	6-16	O-ring	1
6-5	Elbow	1	6-17	Ball	1
6-6	Y-shape adapter	1	6-18	Screw	1
*6-7	O-ring	1	*6-19	O-ring	1
6-8	Muffer shaft	1	6-20	shaft	1
6-9	Middle sleeve	1	*6-21	O-ring	2
6-10	Cover	1	6-22	Nut	1
6-11	Seat	1	6-23	Handle wheel	1
6-12	Nut	1			

#: Optional accessories \*: Wearing parts





